

Sunrise Manor

Neepawa, Manitoba



Developed By



**STONE CLIFF
BUILDERS**



Welcome to Sunrise Manor *in the Heart of Neepawa*

Reserve your unit today!

**Maintenance Free
Affordable Living**
for active adults



The overall purpose of the corporation is to support and enhance independent and healthy living for seniors in the Town of Neepawa, Manitoba.

Sunrise Manor will be located on the Quiet and Peaceful CN Land, which is on the Yellowhead Highway 16 at the intersection with Highway 5.

This three-story development is perfect for active older adults seeking a simplified lifestyle – one that is engaging, social, and free from daily responsibilities like housekeeping and home maintenance.

The building consists of one and two-bedroom apartment units. All apartments are spacious and fully equipped with a private balcony.

If you or someone you know are seeking secure and affordable retirement living in a supportive and home-like environment, plan to make Sunrise Manor your new home.

Developed, owned and operated by Stone Cliff Builders Inc.

July 2018

Contents subject to change without notice.

Features & Amenities

Ready to make Sunrise Manor your new home?

The Building

- Beautifully designed 3-story building with brick and acrylic stucco
- Covered canopy at front entrances
- Quiet hydraulic elevator
- Professionally landscaped grounds
- Parking for residents and guests

Suites

- Spacious 1 and 2-bedroom apartments with private balconies
- Modern galley style kitchen with quartz countertops, backsplash tile, stainless steel sink, over-the-range microwave, refrigerator/freezer, dishwasher, and stove
- In-suite washer and dryer
- Almost all suites include a bathtub and a separate shower stall
- Individually controlled heat and air conditioning for each suite

Other Features

- Multi-purpose room for activities or dining with fireplace
- Library room with spacious sitting area

- Private dining room for family occasions
- Proximity card “key” system at main entrance for ease of access to the building
- On-site staff for building administration and maintenance
- Smoke detectors system throughout suites and building with central monitoring

Added Conveniences / Additional Options Available

- Each resident can receive a personal security device provided by Victoria Lifeline
- Postal drop service*
- On-site hair salon*
- Canada’s leader in Personal Response and Support Service*
- Weekly housekeeping service for each suite*
- Garbage collection for each suite three times a week*
- Visiting Home Care* workers

*services are available for extra charge

Accessible

Design of the building and living units capable of accommodating the special mobility needs of seniors.

Activities

Social and recreational activities help residents remain active, independent, and healthy!

Community

For seniors living in Neepawa and surrounding communities – no need to move to other communities to receive the same level of service!



A | One Bedroom Unit
approx. 690 sq. ft plus balcony
(12 units available at \$1100*)

*subject to change

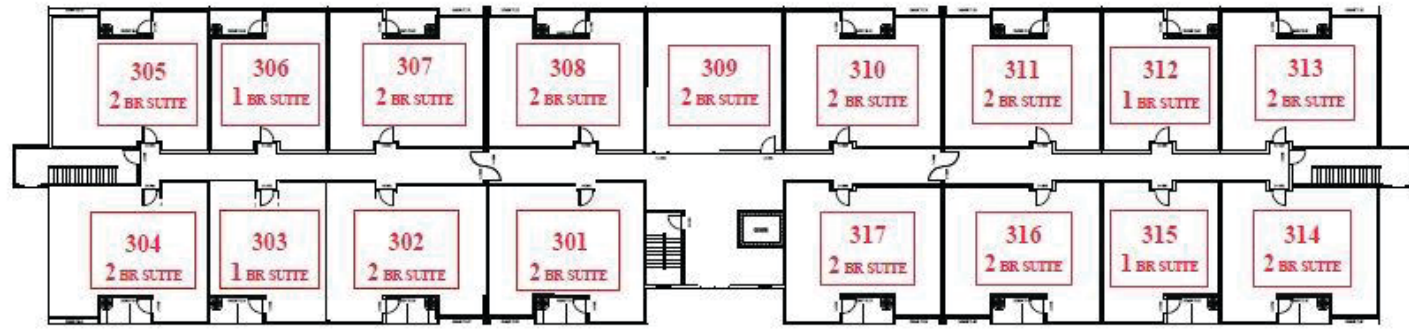


B | Two Bedroom Unit
approx. 925 sq. ft plus balcony
(36 units available at \$1200*)

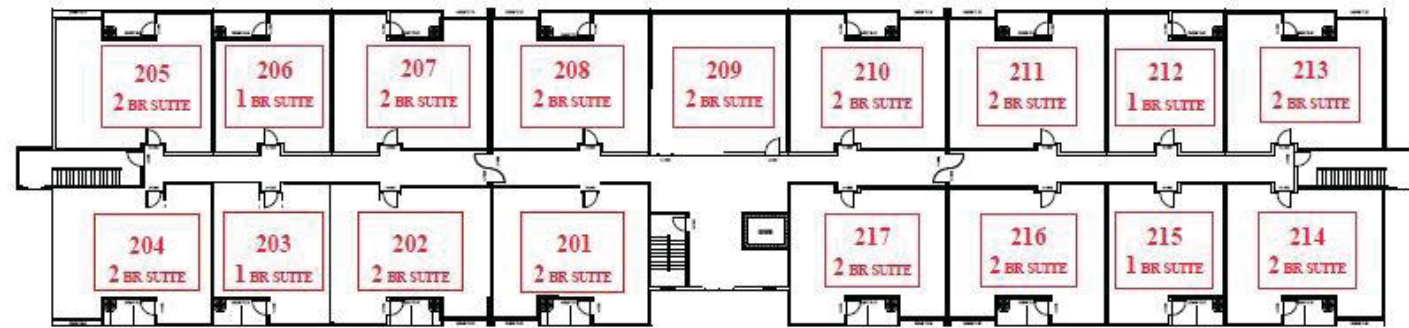
*subject to change

Building Layout

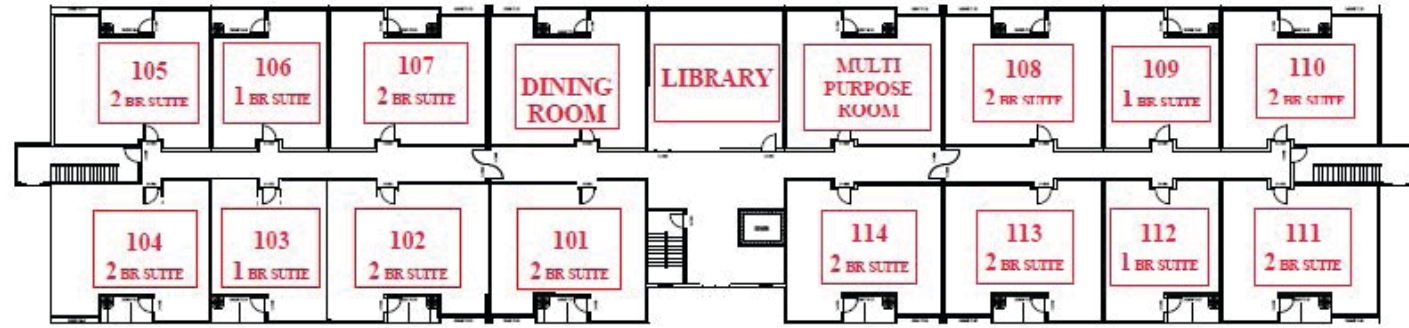
Room Floorplans



3rd FLOOR



2nd FLOOR



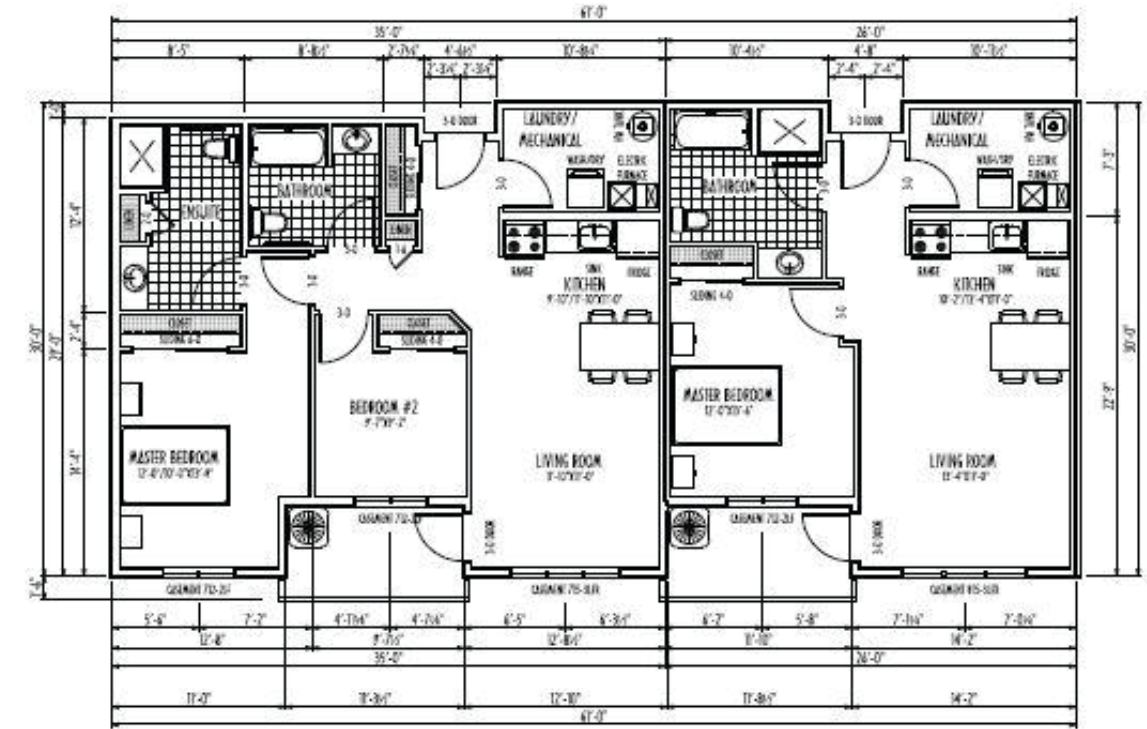
1st FLOOR



Committed to offering residents quality services at the most affordable rents possible.

Secure your future today by completing and returning the Reservation Form provided at stonecliffbuilders.ca. Returning the form lets you reserve a specific living unit in the new building and allows you and your family to begin making plans for your future move.

Monthly Rent does not include Telephone, Cable TV, Internet or Hydro. Sunrise Manor is a non-smoking building and has a no pet policy.



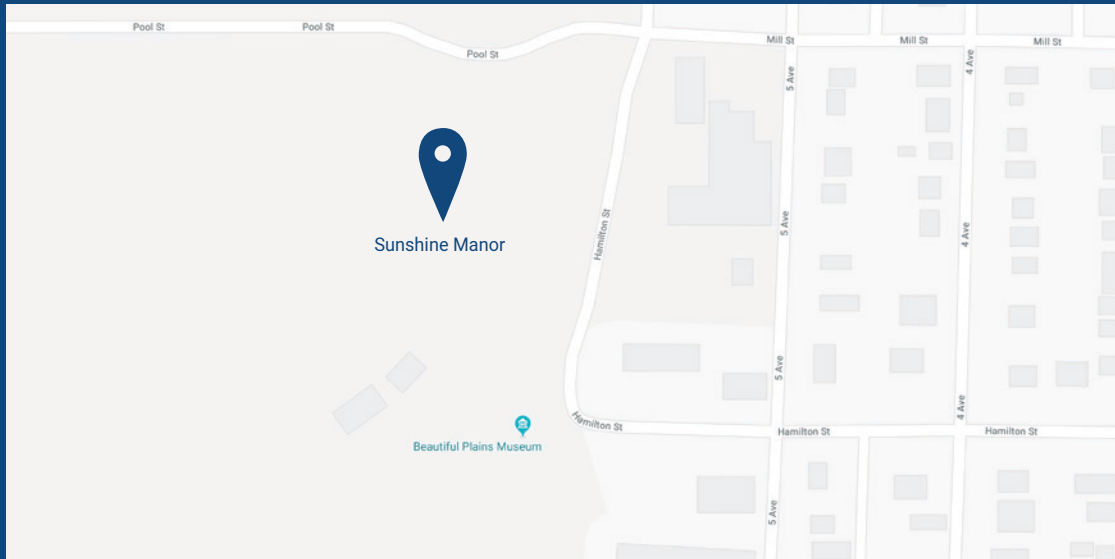
2 BEDROOM & 1 BEDROOM SUITE FLOOR PLAN
SCALE 3/16" = 1'-0"

All units are offered on a first-come-first-served basis, so the earlier you complete and return the Reservation Form, the better chance you have of reserving your preferred unit!

Contents subject to change without notice.

Sunrise Manor

Neepawa, Manitoba



Stone Cliff Builders

Suite 183 3-20 Brandt Street
Steinbach, Manitoba, Canada
R5G 1Y2

204-392-9920

info@stonecliffbuilders.ca

stonecliffbuilders.ca



**STONE CLIFF
BUILDERS**